

Jacuzzi[®]
Hot Tubs

Anything else
is just a hot tub



JACUZZI[®] HOT TUB BROCHURE



In today's modern society, we face life at an unprecedented pace.

With a thousand things vying for our attention, setting time aside to recalibrate and relax isn't always easy. Whether it's balancing family life, friends, work, or anything else that demands our time, our wellbeing has become an important thing to look after.

As the industry founders, we understand the importance that hydrotherapy has played over the decades in improving physical and mental wellbeing.

Times may change but the top priority Jacuzzi® places on quality hydrotherapy remains.

From the very first product we created, our mission has been built around four pillars of success - health, performance, design and pleasure. Every Jacuzzi® Hot Tub is built on the foundation of these pillars.

So whether you're looking for a hot tub to unwind, experience a rejuvenating hydromassage, or a place to bring friends and family together, the information you need to help choose the best hot tub for you can be found in the following pages.

Before long, you will understand why anything else [is](#) just a hot tub.

The Jacuzzi® Brand

The relentless motivation that drives Jacuzzi® brand forward is simple - to create wellbeing products that improve people's mental and physical state.

From the founding days of the brand in the 1940s, Jacuzzi® products are now manufactured in three continents and enjoyed by users across more than 100 countries.

By employing thousands of people around the world, and representing decades of innovation, design, performance and ease of use, we've earned the trust of millions, globally.



Hot Tubs



Swim Spas



Commercial



Saunas



Bath Tubs



Shower & Steam

Heritage

The story of the Jacuzzi® brand began with a father's unwavering love for his son.

In the 1940s, Candido Jacuzzi's toddler son, Ken, developed rheumatoid arthritis. Driven with a purpose to help relieve his pain, Candido invented a hydrotherapy pump for the family bathtub.

The invention, known as the J-300™ pump proved a success.

Once the first sale of the pump was made in the 1950s, the industry for at-home hydrotherapy was brought to life.

Thriving and flourishing more than 65 years later, the Jacuzzi® brand continues to propel the industry forward with the caring mindset the J-300™ pump was built on.



1900s

The Jacuzzi family departs Italy for the United States and transforms the aviation and agriculture industries.



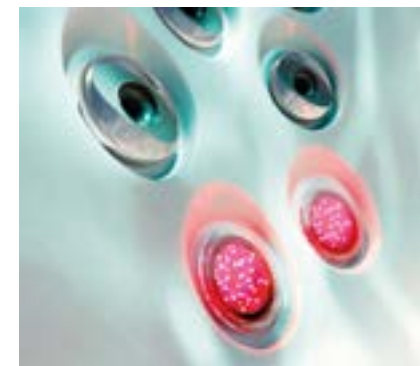
1940s

When Ken was diagnosed with rheumatoid arthritis, his father, Candido, invented a portable hydrotherapy pump. It was placed in the family bathtub to provide pain relieving hydrotherapy. This pump is known as the J-300™.



1950s

The J-300™ pump was presented on national daytime television show Queen for a Day. Boasting 20 million viewers, the Jacuzzi® brand became an overnight sensation.



Present

The Jacuzzi® brand has been awarded more than 700 patents and the number continues to rise. This is a result of continual breakthroughs in jet engineering, design and technology innovations.



Future

The Jacuzzi® brand continues to develop products that have a positive impact on people's health and wellbeing. Jacuzzi® maintains the position of industry leader and the most recognised hot tub brand in the world.

Infrared Therapy

Jacuzzi® is the first and only brand to offer Infrared and Red Light therapy across a range of wellness products, from hot tubs to swim spas and saunas. Premiering in the J-LX® and J400™ Collection, the FX-IR Seat combines patented Infrared and Red Light therapy with hydromassage for unmatched rejuvenation.

The therapeutic benefits of hydrotherapy

The rejuvenating power of Infrared

The regenerative qualities of Red Light therapy

All working together deep beneath the skin's surface



Rejuvenation Meets Relaxation

The rejuvenating powers of Infrared and Red Light therapy work together deep beneath the skin's surface to relieve pain, improve range of motion, and reach a state of mindfulness.



Effortless

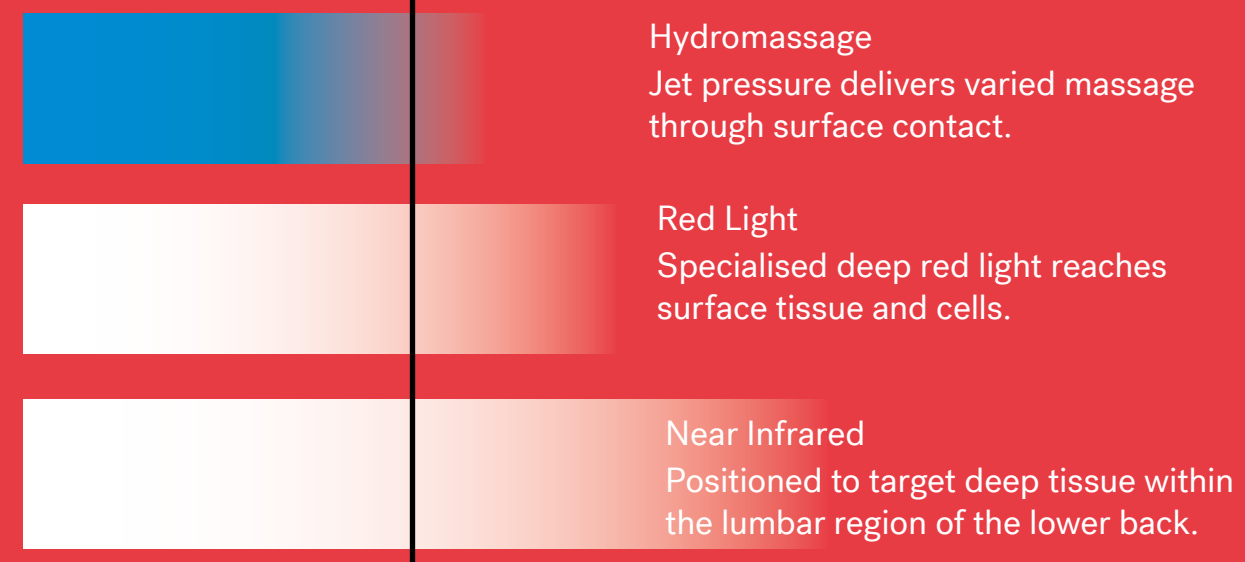
Only Jacuzzi® offers the joys and benefits of hydrotherapy, Infrared and Red Light therapy, effortlessly ready when you are.



Peace of Mind

Founded in research, you can be confident using Infrared and Red Light therapy to enhance your relaxation.

Skin Level

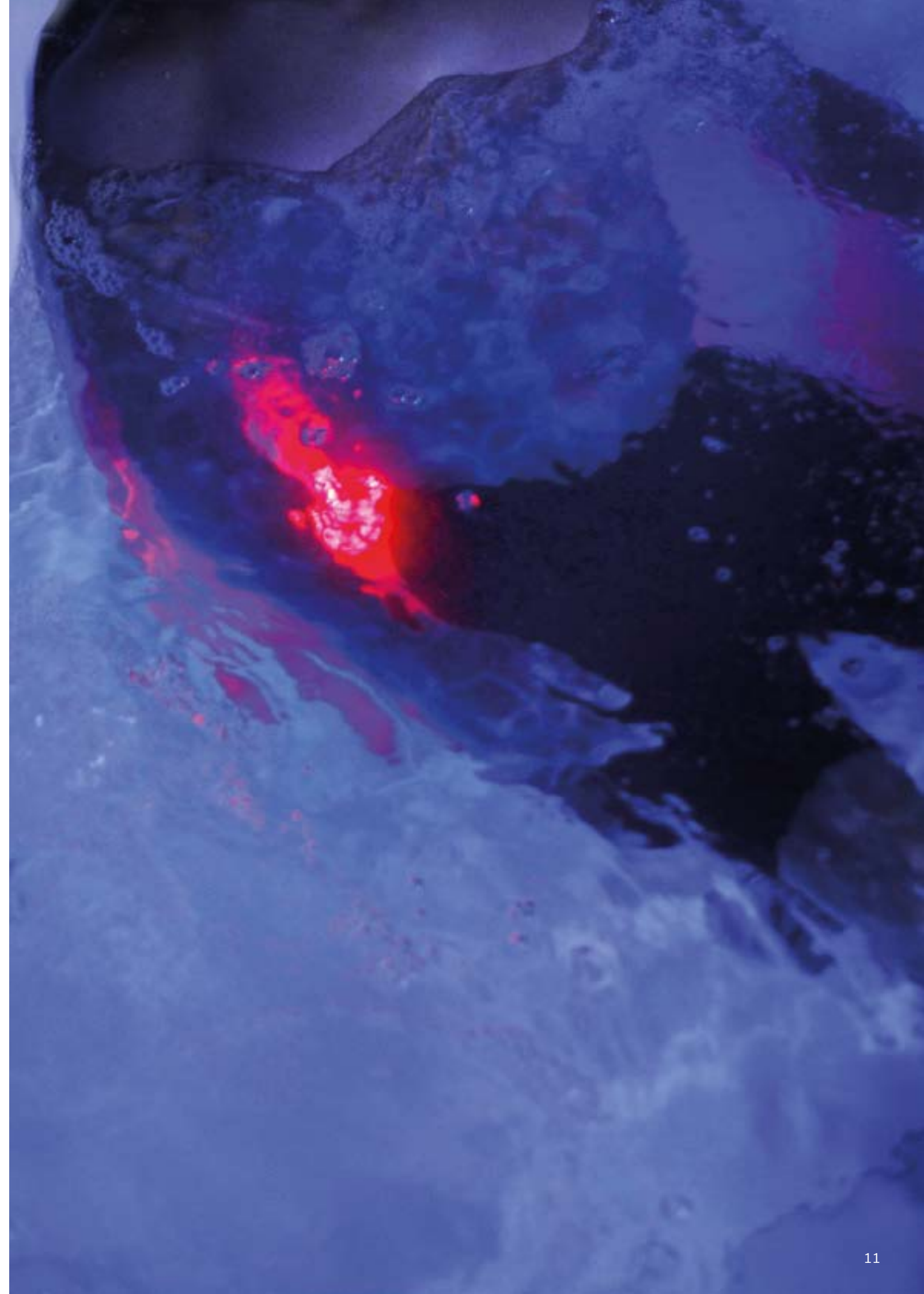


Why Infrared and Red Light therapy is a game changer

As the pioneers of home hydromassage for over 65 years, Jacuzzi® continues to set the industry standard with groundbreaking innovations. We proudly introduce the exclusive combination of patent-pending Infrared and Red Light therapy in our hot tubs and swim spas, an exclusive feature you won't find anywhere else. Embrace the authenticity and quality that only Jacuzzi® can deliver.

Experience ultimate pain relief from Infrared therapy, a breakthrough method that specifically targets lower back issues. With an astounding 619 million people suffering from lower back pain (According to the World Health Organisation), Jacuzzi® understands the global struggle and has designed the FX therapy seat to solely focus on alleviating this chronic discomfort.

Harnessing the power of Near Infrared (NIR) technology, which is FDA-approved as a medical device, this innovative treatment has been clinically proven to promote healing when used consistently. Your SmartTub® allows you to effortlessly control and monitor a daily 20-minute pre-programmed session, ensuring you receive the perfect amount of therapeutic care. Research supports the notion that shorter, frequent cycles are the most effective for pain relief.



Jacuzzi® Ambassadors

Jacuzzi® is serious about wellbeing. All of our products are designed with the aim of improving people's lives and ultimately, helping them relax, recover and reconnect.

We have a long history of partnering with ambassadors who recognise the value our products can bring to everyday lives.



"Being in water is so therapeutic and relaxing for me. It's the one time I really do switch off. It's very important to take a little bit time out for yourself and the Jacuzzi® Hot Tub has helped me massively with that. Even just 20 minutes of relaxation in there on your own can feel like you've been to a spa for the day."

[Kimberley Walsh, Singer and TV Personality](#)



"I'll tell you why it's awesome. At first, it was just for me when I threw parties, hot tubs were cool. Then it became for the kids who absolutely love it, rain, hail or shine. Now something else has happened, now that I train a lot, in my 40s I train heavily, I now use it as a massage treatment after my training and it has been a game changer."

[Peter Andre, British Singer and TV Personality](#)



"Jacuzzi® Hot Tubs have been part of our life for 19 years. We're on our second tub, and I always say it's one of the best things we ever bought when the kids were young. It really got us all chatting and spending quality family time together."

[Sally Gunnell OBE, Double Olympic Champion](#)



"The J-435™ is an amazing hot tub. With different variations of movement and power in the jets it allows me to recover after a hard day's training or relax after travelling. It's a key part to my every day recovery."

[Josh Hodge, Rugby Union Player](#)



"One of the best things about our Jacuzzi® Hot Tub has been getting the family together. We are a family of teenagers and trying to get everybody together in one place at the same time is impossible. As soon as the hot tub arrived, things changed."

[Andrea McClean, Journalist and TV Presenter](#)



"When I've had a long day, there's nothing better than jumping into my Jacuzzi® Hot Tub. You can just sit in there, switch off, and totally relax."

[Adam Peaty OBE, Triple Olympic Champion](#)



Therapy

Dreaming of the ultimate hydromassage in a hot tub?
Quality over quantity matters.

Renowned hydrotherapy in a Jacuzzi® Hot Tub is made of many effective systems, through the Aqualibrium® formula.

This formula calibrates the perfect mix of air and water to the exact pump to jet ratio to ensure a balanced experience in every seat and it doesn't require as many jets as you think.... The right jets and the right mix of air and water makes all the difference.

PowerPro® Jets Collection

Industry-leading and patented hot tub jets. The range of adjustable high-flow, low-pressure hydromassage jets feel like no other.

Different muscle groups demand different types of massage action. Versatile Jacuzzi® PowerPro® Jets deliver a range of adjustable high-flow, low-pressure hydromassage, from robust and stimulating to gentle and rejuvenating, for targeted relief anywhere you need it.



MX

PowerPro® MX

Based on the original Jacuzzi® jet, the MX jets provide a bold massage to the muscles in the lower back.



BX

PowerPro® BX

Sends a bubbling sensation massage to the calves.



FX-L

PowerPro® FX Large

Focusing on the middle of the back to relieve tension and muscle strain, the spiral action massage promotes better circulation.



RX

PowerPro® RX

The spinning RX jet delivers comforting relief to the back and shoulders. It provides the highest performing hydromassage available on Jacuzzi® Hot Tubs.



PX

PowerPro® PX

Perfect for small muscles groups in the wrists, hands and legs, the PX jet's pulsating massage is adjustable.



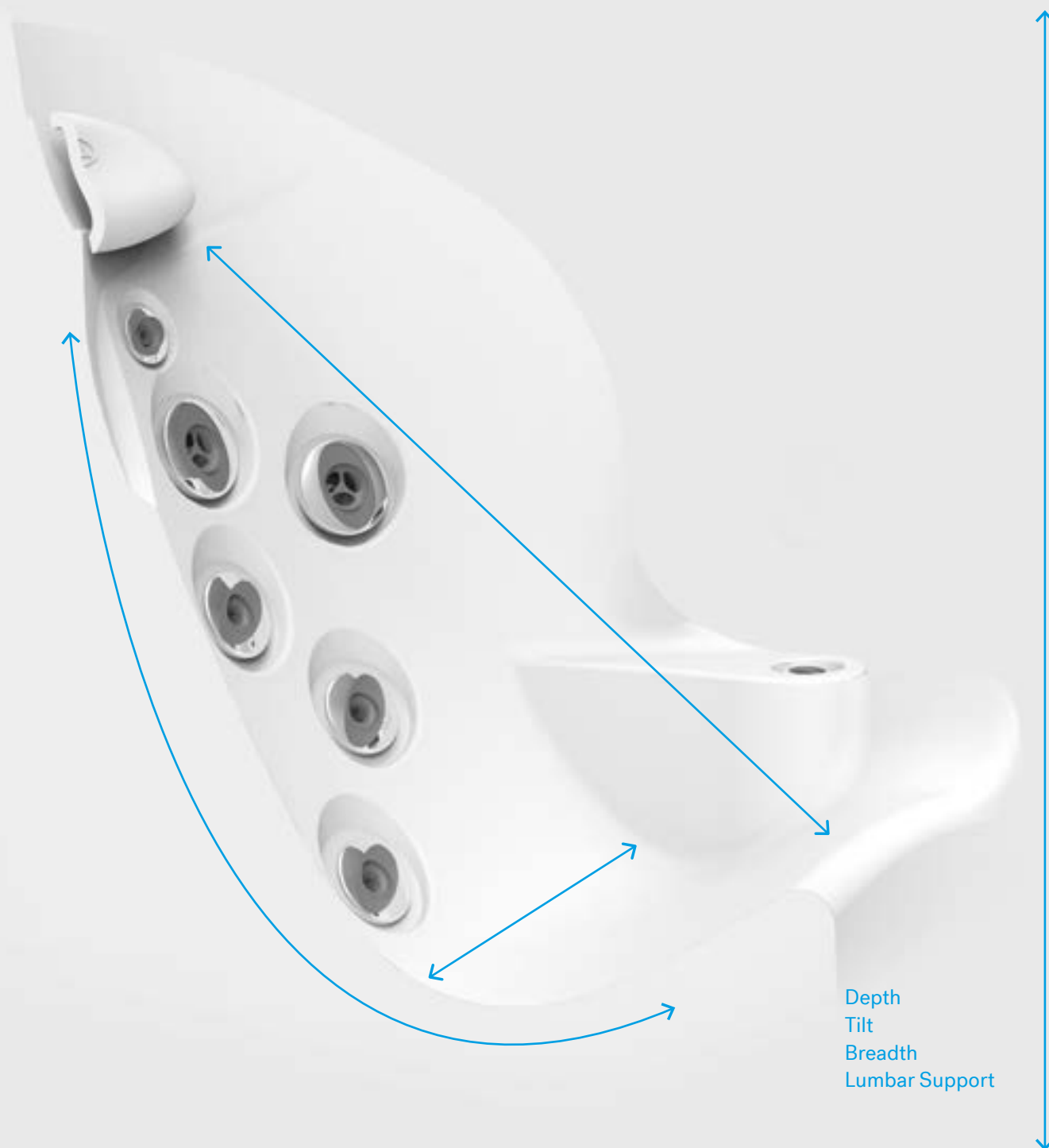
FX-D

PowerPro® FX Directional

Designed to relieve tension and improve circulation, this spiral action directional jet delivers a targeted massage to the hips.

Comfortable Seating

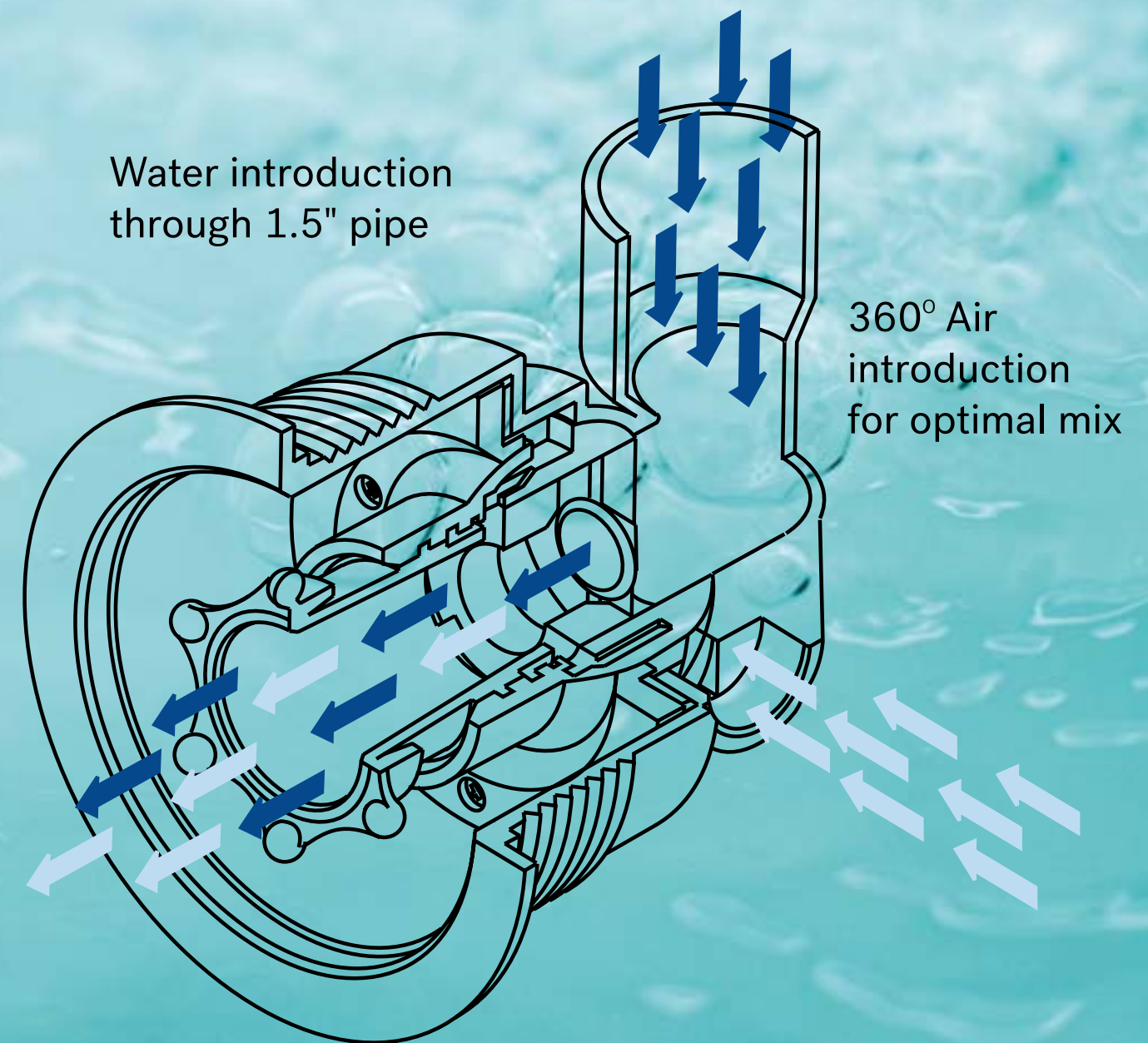
Seats in a Jacuzzi® Hot Tub are designed to follow the natural contours of the body. They are also fitted with recessed jets for a comfortable, premium hydromassage.



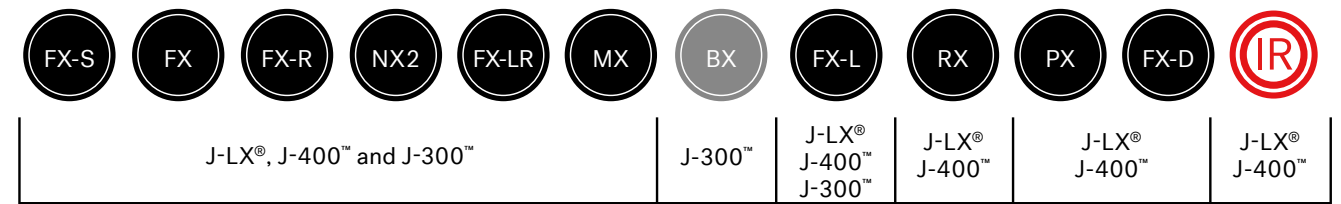
Adjustable Pressure

Each jet is calibrated to deliver the perfect balance of air and water. The seats are designed with the exact pump to jet ratio to ensure optimum hydromassage. This is known as our Aqualibrium® formula.

Jacuzzi® Jets are developed with an emphasis on a 360-degree air induction to provide a unique high-volume, low-pressure massage. It has the power to bring a deeper, more intense massage in a gentle way.



Jets & Seats

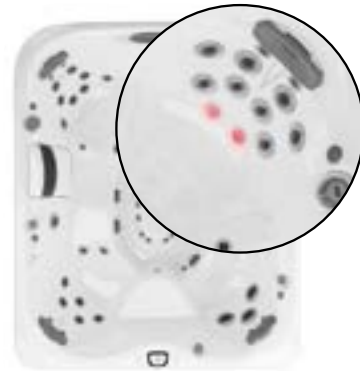


PowerPro® Jets Collection Key



FX Seat (including Infrared and Red Light therapy) J-400™ and J-LX® Exclusive

Our most advanced therapy is the FX seat. This provides a deep, adjustable hydromassage on the back, shoulders and neck and combines near Infrared and deep Red Light therapy on the lumbar back region.



RX Jet Therapy Seat J-400™ and J-LX® Exclusive

The spinning RX jet seat targets the back and neck. It features the highest performing hydromassage jets available in Jacuzzi® Hot Tubs.



MX Jet Therapy Seat J-300™ and J-400™ Exclusive

Proudly renowned as our original Jacuzzi® jet, the MX jet delivers a low pressure, deep tissue massage to the lower back.



ProAir™ Lounge J-300™ Exclusive

Ease tension from your shoulders to your feet with a combination of targeted jets, pulsating FX Rotational jets and exclusive bubbling BX jets. It's a full-body hydromassage experience.



*PowerPro® Jets are available in select models in the J-400™ and J-300™ Collections. Jets are not to scale.

Clean Water

CLEARRAY Active Oxygen™ technology harnesses ozone and UV-C technology to provide a hands-free approach to water care. CLEARRAY Active Oxygen™ System works harder to clean the water longer.

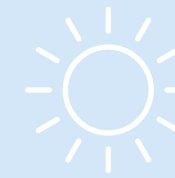
Exclusive to Jacuzzi® products, the advanced oxidation process involves the use of injected ozone gas and a UV-C bulb. Once the ozone is generated, it destroys contaminants and waterborne pathogens.

What does this mean?

- Reduce hot tub chemical usage by up to 50%.
- Save money on maintenance products.
- Soak in water that contains less chemicals.
- Kinder to your skin.



UV-C SYSTEM



We're proud to feature nature-inspired technology that neutralises pathogens.

Works with traditional chlorine or bromine sanitiser, better for sensitive skin.

The same technology is used in bottled drinking water, aquariums and hospitals.

Up to 6-Stage Filtration Process*

STAGE
1

CLEARRAY Active Oxygen™ uses power of air and light to reduce chemical usage and destroy water contaminants and pathogens.

STAGE
2&3

The surface skimming and ProCatch™ bag work together to clean the surface, while trapping large debris for easy removal.

STAGE
4

The ProClear® filter operates with the hot tub's hydromassage pump. It removes small and large particles to maintain the cleanest water.

STAGE
5

The ProStream™ circulation pump pulls the water through a ProClear® filter. It clarifies the water, even when the jets are not running.

STAGE
6

The ProClarity® filter on the ProStream™ circulation pump catches tiny debris and particles that other filters miss. This helps ensure clean, sparkling water.



CLEARRAY
ACTIVE OXYGEN™
CLEAN WATER SYSTEM

Quality

Our Jacuzzi® Engineering Teams are constantly innovating.

We're creating hot tubs that are energy efficient and use the best, most sustainable materials available.

For you, this means relaxing in a quality product that will provide you with many enjoyable years of rejuvenating hydrotherapy.

Programmable Filtration

Adjust filtration settings based on desired energy usage.

Energy Efficient Insulation

Industry leading, multi-layered insulation that retains and recycles heat.

ProFinish™ Cabinetry

High quality, UV-resistant cabinetry. Tool-free access makes it easier to reach components under the shell.

ProFusion™ Shell

Three layers for a strong, scratch-resistant shell.

Pump to Jet Ratio

Precise pump to jet ratio for optimised water pressure in every seat.

PowerPro™ Jets

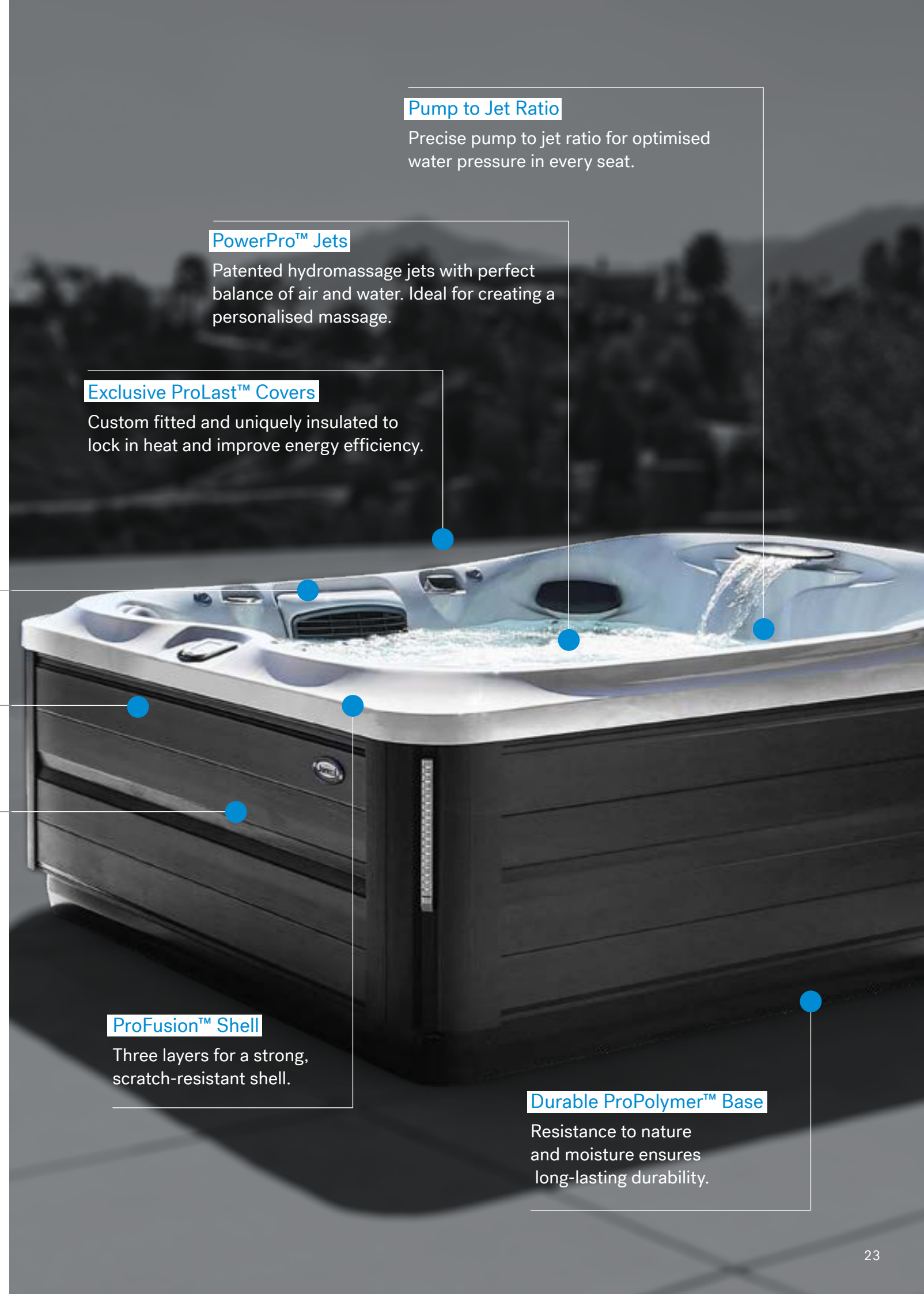
Patented hydromassage jets with perfect balance of air and water. Ideal for creating a personalised massage.

Exclusive ProLast™ Covers

Custom fitted and uniquely insulated to lock in heat and improve energy efficiency.

Durable ProPolymer™ Base

Resistance to nature and moisture ensures long-lasting durability.



SmartTub®

Simplified hot tub ownership at your finger tips



Customise your settings

- Control your therapy, track usage and program filtration.
- Set temperature.
- Turn on internal and external lighting.
- Start massage jets.
- Upgrade to a SmartTub® sensor kit for increased protection and monitoring.



Energy Management

- Industry-first SmartTub® allows you to enable vacation mode at the touch of a button, saving standby energy costs by up to 25%.
- Personalised soak scheduling means you can set the times you choose to use your hot tub, and SmartTub® will create the most efficient heating program.
- Energy usage reports enable users to monitor kWh used and track off-peak and peak energy costs.



Easy to use

- Always connected to the best signal - either cellular or Wi-Fi connection, supported by Bluetooth technology.
- Activate your hot tub with smart home devices including Amazon Alexa, Google Assistant™, Siri and Apple Watch.
- Access personalised tips and how-to videos.



SmartTub® system uses cellular-based communication and requires cell service from our provider partner in your area. See website for details.
*Requires subscription beginning in second year of ownership.
**Estimates are based on sensor readings and are not meant to match your utility measurements, see your local utility company for specifics to your local system.
Alexa, and all related marks are trademarks of Amazon.com, Inc. or its affiliates. Siri and Apple Watch are trademarks of Apple Inc., Registered in the U.S. and other countries and regions.

Efficient Running Costs

All Jacuzzi® Hot Tubs undergo rigorous testing by the CEC - California Energy Commission. Findings reveal that on average, our hot tubs are 22% more efficient than the strict standards they set.

Combining more than 65 years of research and development with key innovations, Jacuzzi® is able to reduce both maintenance and energy costs.

Our SmartTub™ app allows us to get actual real world usage data and on average, our UK customers use around 5kWh per day* to enjoy their Jacuzzi® Hot Tub.

To put that into perspective, it is only about the same as a family of 4 taking a 10 minute shower a day.

*Based on 1,850 privately owned spas in the UK, used throughout 2022 and fitted with SmartTub®.



Multi-Layered Insulation

Jacuzzi® Hot Tubs come with multiple forms of insulation. This includes high and low density foam inside the cabinet, heat reflective perimeter insulation and insulated ProLast™ covers. Insulation limits heat loss from the water, maximises energy re-use and therefore makes the hot tubs more energy efficient.



Programmable High-Flow Pumps

Jacuzzi® pumps are designed to maximise water flow at the lowest possible energy draw. They can also be programmed to align with the filtration system when energy efficient mode is activated. This enables the best of both worlds - reducing running costs while maintaining water quality.



Pump to Jet Ratio

Unnecessary use of jets can lead to higher running costs. That's why more jets in a hot tub doesn't always mean better hydromassage. Jacuzzi® has mastered the perfect combination of air, water and pump to jet ratio. This creates a quality hydromassage and lower hot tub running costs.



Multi-Stage Filtration

Heating and water maintenance are key influencers of hot tub running costs. For more than 65 years, we have continued to refine our industry leading multi-stage filtration system. This includes ultraviolet light and ozone water treatment to reduce chemical usage and how often the hot tub water needs to be changed.



Remote Energy Tracking and Control

Our exclusive SmartTub® technology, always runs on a cellular and Wi-Fi connection and allows you to reduce standard energy usage by up to 25%. Our Smart Heat mode can auto adjust water temperature based on your soak times, or if you're on holiday. SmartTub® can adjust hot tub settings to adapt to local weather, water volume, and peak vs off peak energy tariffs, all to help you save money.

*SmartTub® Optional Extra

There's a Jacuzzi® Hot Tub for every kind of space

Is your dream hot tub area spacious or compact?

Whether it's placed indoors, outdoors, semi-sunken or even in-ground, a Jacuzzi® Hot Tub can be a soft addition, or the stunning centrepiece of your space.

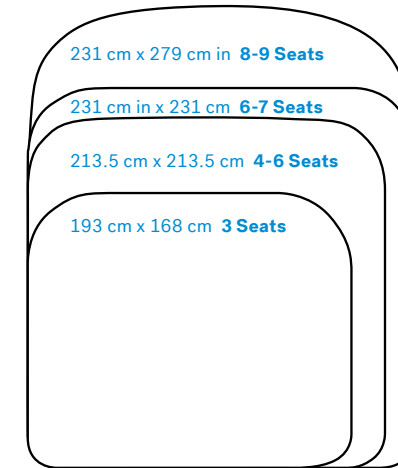






Find Your Perfect Hot Tub

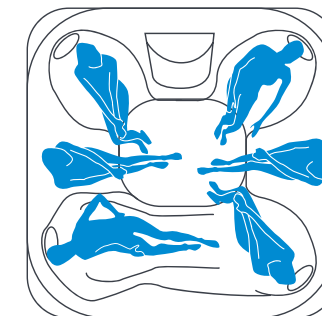
1. Select size and massage options



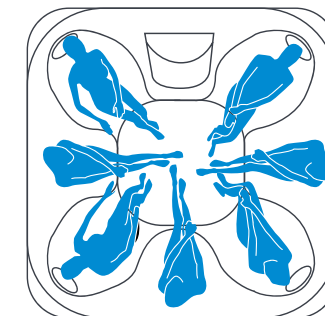
Do you have a small garden? Many people with small gardens assume they're limited to buying a hot tub with less seating options.

Good news! A hot tub with more massage combinations only requires a slightly larger garden footprint. In some cases, it's only a matter of a few extra centimetres.

2. Choose Lounge vs. Open Seating



A lounge seat offers a full-body massage option and a more secluded spa experience.



An open seating model offers more massage options and makes it easier to communicate with one another.

3. Find the collection that's right for you

JLX® - Contemporary design, industry leading energy efficiency, and exclusive Infrared and Red Light therapy make the J-LX® Collection the ultimate wellness experience.

J-300™ - Premium PowerPro® Jets, a unique Hydrosoothe™ massage pillow, and ergonomically-designed seating puts comfort at the forefront in our signature J-300™ Collection.

J-200™ - Thoughtful jet placement, stylish cabinetry design, and Jacuzzi® renowned build quality makes the J-200™ Collection perfect for those looking for a great spa at everyday value.

J-400™ - A distinct high-back design, our most advanced PowerPro® rotational jet technology, and exclusive Infrared and Red Light therapy make the J-400™ Collection one of our best hydromassage experiences.



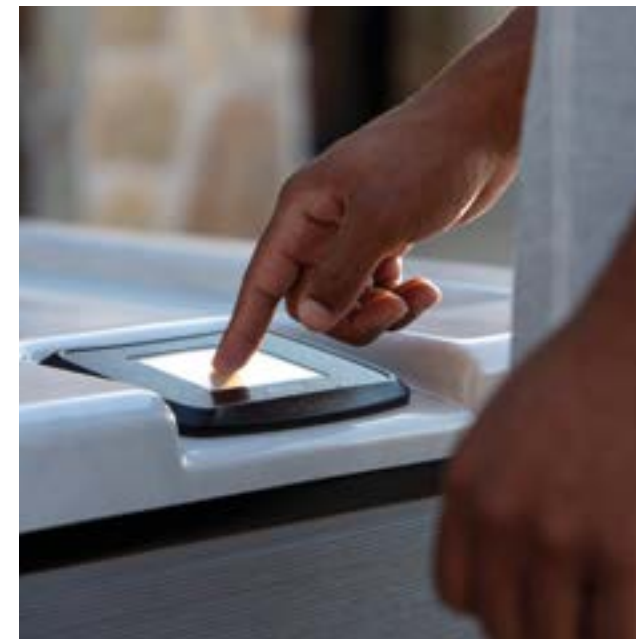
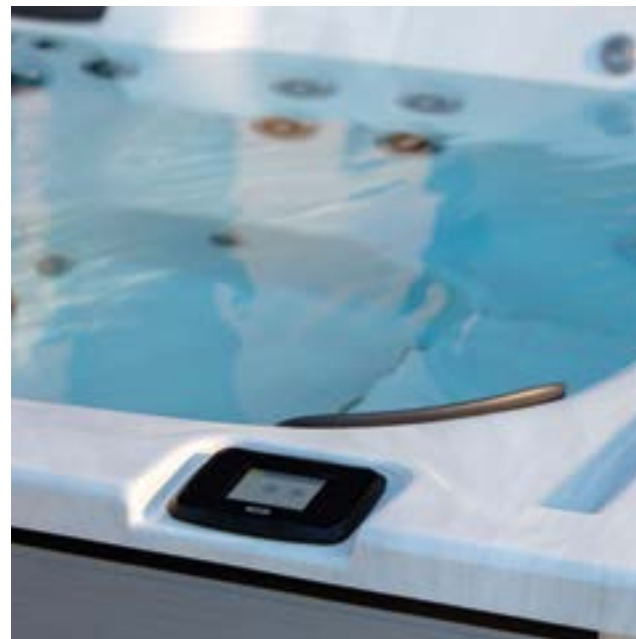
J-LX[®]



The J-LX[®] Collection



Clean, simple lines frame the welcoming water of our newest product family. With our exclusive patent-pending Infrared and Red Light therapy taking hydromassage to the next level, we're leading the industry once again by creating the ultimate wellness experience.



Therapy

- Jacuzzi® PowerPro® technology helps relieve aches and pains with a variety of massage options that target key muscle groups.
- The rejuvenating powers of Infrared and Red Light therapy work together deep beneath the skin's surface to relieve pain, improve range of motion, and reach a state of mindfulness.

Design

- Ultra contemporary geometric design enhances your outdoor space with crisp lines.
- Dramatic exterior lighting.
- Gentle infinity-edge waterfall provides a soothing experience.
- ProLast™ cover designed to perfectly fit your Jacuzzi® Hot Tub. UV, water, and stain resistant ProLast™ marine grade fabric means your cover lasts longer and maintains its new condition for longer.

Ease of Use

- The SmartTub® system is the smart way to control and monitor your hot tub remotely.
- CLEARRAY Active Oxygen™ system: nature-inspired technology that neutralises pathogens for crystal clean water.
- The full colour ProTouch™ control uses touch screen technology for ease of use.
- 6 stage filtration - ensures water flow in your hot tub is enhanced, providing cleaner, more efficient water use, meaning your spa doesn't have to work as hard to maintain superior water purity.

Energy Efficient

- All of our hot tubs incorporate dual layer insulation, making them the most energy efficient hot tubs in the market.
- The J-LX® Collection combines our best insulation technologies to make this collection the most energy efficient that Jacuzzi® offers.
- SmartTub® allows the user to monitor and reduce energy usage.

The J-LX[®]

Collection



J-LX[®]

Leading the industry again, the J-LX[®] combines patent-pending Infrared and Red Light therapy with hydromassage for unmatched rejuvenation. Clean, simple lines frame the open seating layout with seven ergonomic seating options.

Dimensions*
226 cm x 226 cm x 87 cm
Seating Capacity: 6-7
Total Jets: 41

Acrylic Options



Platinum

Cabinetry Colours




Smoked Ebony
Brushed Grey


ProLast™ Cover



Black

 CLEARARRAY included

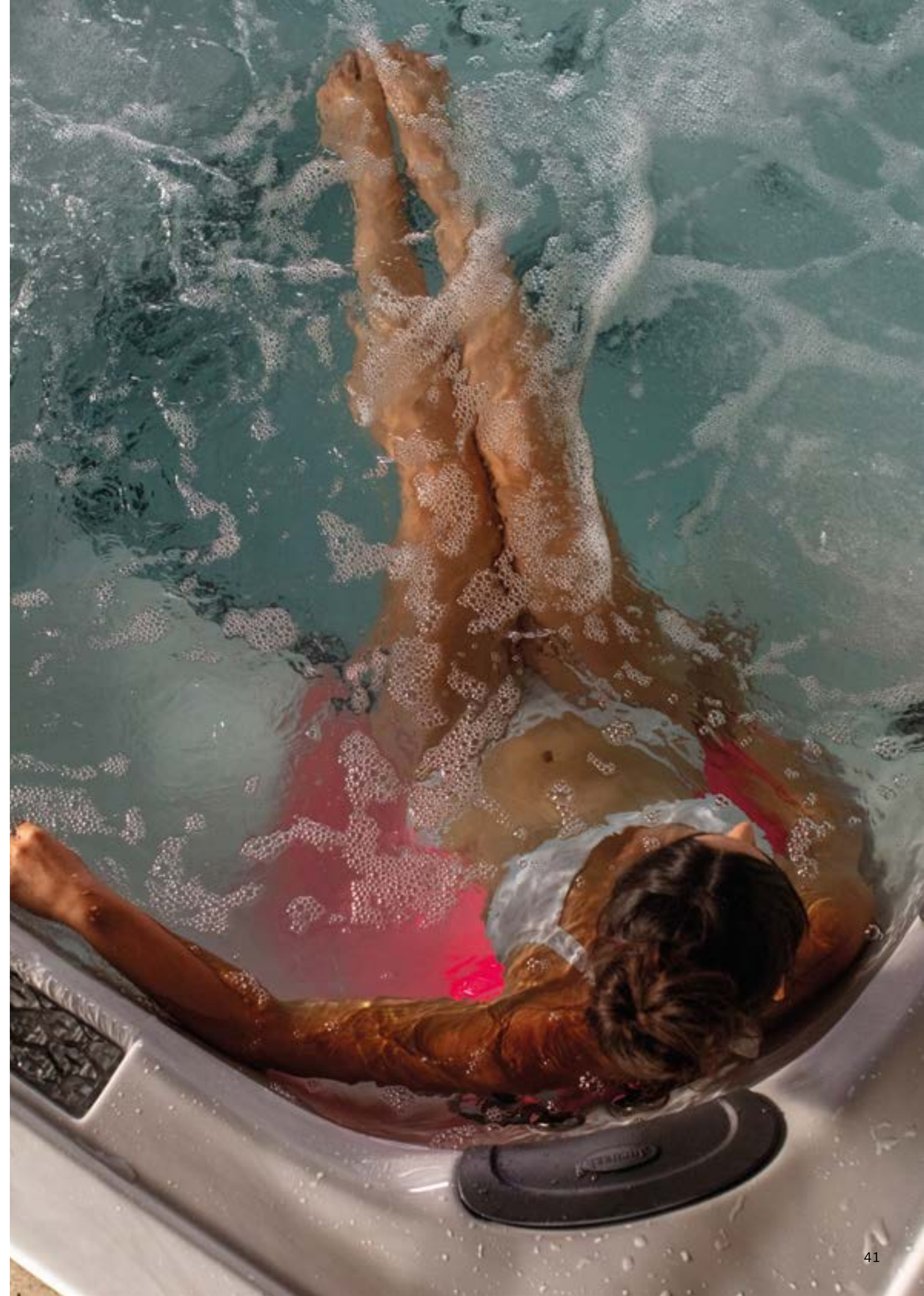
 SmartTub[®] included

 Infrared and Red Light therapy included

J-LXL[®]

With our patent-pending Infrared and Red Light therapy taking hydrotherapy to the next level, we're leading the industry once again by creating the ultimate wellness experience. This modern design touts stunning features, from the sleek exterior and infinity-edge waterfall, to multi-layer insulation for superior energy efficiency. Features a full-body lounge seat as part of six ergonomic seating options.

Dimensions*
226 cm x 226 cm x 87 cm
Seating Capacity: 5-6 (1 Lounge)
Total Jets: 39



Images for illustration purposes only. Dimensions and specifications provided for guidance only, actual product may vary. Please speak to your local retailer for pricing or for more information. *All hot tub dimensions are shown in: L x W x H. To view the full collection, please visit Jacuzzi.com



J-400TM



The J-400™

Collection



Offering the very best in Jacuzzi® therapy, design and ease of use and performance, the J-400™ Collection delivers optimum hydromassage through our PowerPro® jet range.

With additional features such as the high back design, foot dome, loungers and barrier-free seating, and SmartTub® as standard, you can expect to receive the best in hydrotherapy and comfort.



Therapy

- Jacuzzi® PowerPro® technology helps relieve aches and pains with a variety of massage options that target key muscle groups.
- J-400™ exclusive RX therapy seat utilises our highest performing jet technology for the best back and neck hydromassage found in Jacuzzi® Hot Tubs.
- The rejuvenating powers of Infrared and Red Light therapy work together deep beneath the skin's surface to relieve pain, improve range of motion, and reach a state of mindfulness.

Design

- The distinct high back design adds privacy and protection from the elements while creating deeper seats for full body immersion.
- ProFinish™ cabinetry adds a modern twist to your outdoor space.
- Find the perfect ambience with premium LED lighting.
- ProLast™ cover designed to perfectly fit your Jacuzzi® Hot Tub. UV, water, and stain resistant ProLast™ marine grade fabric means your cover lasts longer and maintains its new condition for longer.

Ease of Use

- The SmartTub® system is the smart way to control and monitor your hot tub remotely.
- CLEARRAY Active Oxygen™ system: nature-inspired technology that neutralises pathogens for crystal clean water.
- The full colour ProTouch™ control uses touch screen technology for ease of use.
- 6-stage filtration - ensures water flow in your hot tub is enhanced, providing cleaner, more efficient water use, meaning your spa doesn't have to work as hard to maintain superior water purity.

Energy Efficient

- All of our hot tubs incorporate dual layer insulation, making them the most energy efficient hot tubs in the market.
- SmartTub® allows the user to monitor and reduce energy usage.

The J-400™

Customer Favourites



J-495™



The J-495™ is the largest hot tub in the Jacuzzi® Hot Tub range. This spacious hot tub can seat up to nine people and is fitted with 71 PowerPro® jets. Perfect for creating a relaxing environment while entertaining large parties or family gatherings, everyone can enjoy the best hydrotherapy Jacuzzi® offers.

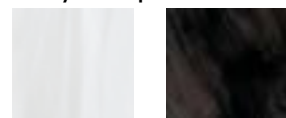
Dimensions*

231 cm x 279 cm x 95 cm (110.5 cm at back)

Seating Capacity: 8-9

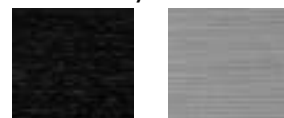
Total Jets: 71

Acrylic Options



Platinum Midnight

Cabinetry Colours



Smoked Ebony Brushed Grey

ProLast™ Cover



Black



J-475™



The J-475™ is a spacious six-seat model that's designed for functionality as well as exceptional performance. It also gives you access to the J-400™ Collection's exclusive features, such as the high-wide waterfall and high back design for additional privacy. The PowerPro™ jets provide premium hydromassage options in every seat.

Dimensions*

231 cm x 231 cm x 95 cm (110.5 cm at back)

Seating Capacity: 6 (1 Lounge)

Total Jets: 55



J-435™



The J-435™ hot tub is one of our most popular and encompasses the Jacuzzi® approach to design and performance. Fitted with 47 PowerPro™ jets, enjoy the ultimate hydromassage in the lounge or high back corner seats. The seats are ergonomically designed to provide maximum support and comfort with added privacy.

Dimensions*

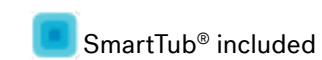
213.5 cm x 213.5 cm x 95 cm (110.5 cm at back)

Seating Capacity: 6 (1 Lounge)

Total Jets: 47



Infrared and Red Light therapy included



SmartTub® included



Bluetooth Speaker included

Images for illustration purposes only. Dimensions and specifications provided for guidance only, actual product may vary. Please speak to your local retailer for pricing or for more information. *All hot tub dimensions are shown in: L x W x H. To view the full collection, please visit Jacuzzi.com



J-300TM



The J-300™

Collection



The J-300™ Collection provides superior hydrotherapy features without compromising on design, ease of use, or comfort.

With smart engineering, premium features and superior jetting technology, the J-300™ is the ideal collection for those looking to enhance their wellbeing and hydromassage experience.



Therapy

- Jacuzzi® PowerPro® jet technology includes targeted deep tissue jets for a premium hydromassage experience.
- A unique Hydrosoothe™ massage pillow delivers a superior head and neck massage.
- Treat yourself to a full body hydromassage in the ProAir™ lounge seat, exclusive to the J-375™. Features pulsating FX rotational jets and bubbling BX jets.

Design

- Enjoy subtle and customisable lighting with ProLite™ LED lighting.
- ProFinish™ Cabinetry adds a modern twist to your outdoor space.
- Relax with the sight and sound of the WaterColour™ waterfall.
- ProLast™ cover designed to perfectly fit your Jacuzzi® Hot Tub. UV, water, and stain resistant ProLast™ marine grade fabric means your cover lasts longer and maintains its new condition for longer.

Ease of Use

- Illuminated digital control panel is simple and easy to use.
- CLEARRAY Active Oxygen™ system: nature-inspired technology that neutralises pathogens for crystal clean water.
- Compatible with optional SmartTub® system, the smart way to control and monitor your Jacuzzi® Hot Tub remotely.
- 4-stage filtration - ensures water flow in your hot tub is enhanced, providing cleaner, more efficient water use, meaning your spa doesn't have to work as hard to maintain superior water purity.

Energy Efficient

- All of our hot tubs incorporate dual layer insulation, making them the most energy efficient hot tubs in the market.
- SmartTub® allows the user to monitor and reduce energy usage.

The J-300™

Customer Favourites



J-375™



Like all hot tubs in the J-300™ Collection, the J-375™ benefits from the advanced Aqualibrium® hydromassage formula for enhanced wellbeing experiences. This model features our exclusive ProAir™ massage lounger with pulsating jets to relieve tension from your shoulders to your feet.

Dimensions*

231 cm x 231 cm x 95 cm

Seating Capacity: 6 (1 Lounge)

Total Jets: 52



J-345™



The J-345™ is one of the larger capacity hot tubs in the J-300™ series, with the ability to seat up to seven people. It features the collection's Hydrosoothe™ massage pillows for tension relief and enhanced relaxation. The MX jet therapy seat sends a low pressure, deep tissue massage to the lower back.

Dimensions*

213.5 cm x 213.5 cm x 92 cm

Seating Capacity: 7

Total Jets: 41



J-335™



Combining sleek design with incredible performance, the popular J-335™ offers enough seating for six people, including a compact lounge seat. With 42 PowerPro® jets, you can completely customise your hydromassage.

Dimensions*

213.5 cm x 213.5 cm x 92 cm

Seating Capacity: 6 (1 Lounge)

Total Jets: 42



J-315™



This compact hot tub can fit 2-3 people and is ideal for small patios or balconies. With 23 PowerPro® jets, the J-315™ retains the superior hydromassage qualities the J-300™ collection offers.

Dimensions*

168 cm x 193 cm x 80.65 cm

Seating Capacity: 3 (1 Lounge)

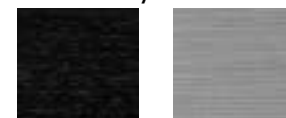
Total Jets: 23

Acrylic Options



Platinum Midnight

Cabinetry Colours



Smoked Ebony Brushed Grey

ProLast™ Cover



Black



Images for illustration purposes only. Dimensions and specifications provided for guidance only, actual product may vary. Please speak to your local retailer for pricing or for more information. *All hot tub dimensions are shown in: L x W x H. To view the full collection, please visit Jacuzzi.com

J-2000™

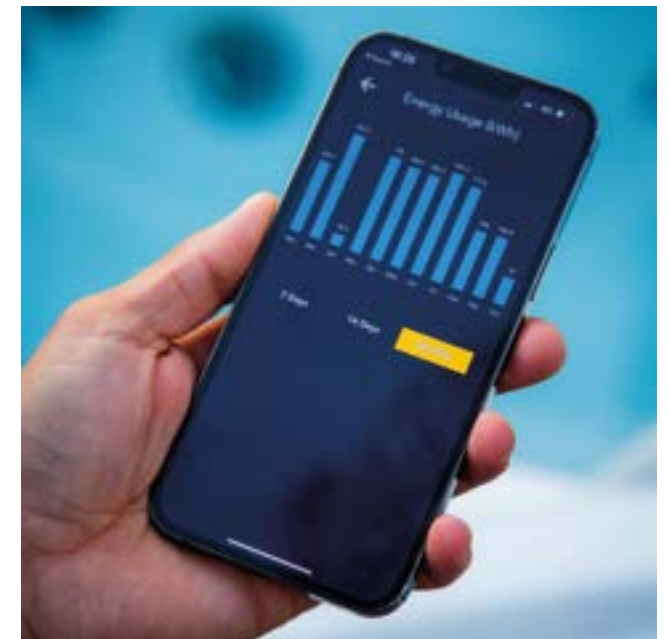


The J-200™ Collection



The J-200™ Collection pairs performance with functionality and is the perfect introduction to hydrotherapy.

Featuring Proprietary jets, this range is ideal for those wanting a quality massage without compromising on reliability or value.



Therapy

- Proprietary jets, positioned in the right place to provide you with a variety of massage options.
- Multiple air controls giving adjustability in the intensity of your experience.

Design

- Distinctive durable cabinetry with integrated LED exterior lighting.
- Ergonomically designed seats with different depths and also barrier free so not only will you find the perfect seat, but moving around the spa is easier too.
- Multi-Coloured LED lights and backlit headrests to really make a statement at night.
- ProLast™ cover designed to perfectly fit your Jacuzzi® hot tub. UV, water, and stain resistant ProLast™ marine grade fabric means your cover last longer and maintains it's box fresh look for longer.

Ease of Use

- CLEARRAY Active Oxygen™ system: nature-inspired technology that neutralises pathogens for crystal clean water.
- Tool-free access cabinetry.
- ProClassic™ 50sqft Filtration.
- Sleek filter cover that incorporates and debris net to make cleaning your spa easier and quicker.
- 4-stage filtration - ensures water flow in your hot tub is enhanced, providing cleaner, more efficient water use, meaning your spa doesn't have to work as hard to maintain superior water purity.

Energy Efficient

- All of our hot tubs incorporate dual layer insulation, making them the most energy efficient hot tubs in the market.
- SmartTub® allows the user to monitor and reduce energy usage.

The J-200™

Customer Favourites



J-275™



Seating up to 6 people, the J-275™ hot tub provides all the benefits of the J-200™ Collection. It offers the classic Jacuzzi® hydromassage experience with 45 carefully placed jets, two corner seats and a lounge.

Dimensions*

226 cm x 226 cm x 91 cm

Seating Capacity: 6 (1 Lounge)

Total Jets: 38



J-245™



With room for up to 7 adults, the J-245™ features 36 jets, four ergonomically designed seats, cool-down seats, and a central foot dome. With inward facing seating, this model is ideal for socialising and connecting with one another.

Dimensions*

213 cm x 213 cm x 91 cm

Seating Capacity: 7

Total Jets: 36



J-235™



Featuring 34 jets in total, the J-235™ can seat six people and can be installed indoors or outdoors. It includes two corner pillowed seats, a pillowed lounge seat, a cooling-down seat and touch panel control.

Dimensions*

213 cm x 213 cm x 91 cm

Seating Capacity: 6 (1 Lounge)

Total Jets: 34



J-225™



The J-225™ is a small, compact hot tub that seats up to 4 people. It features 26 ClassicPro™ jets that are strategically placed around the barrier-free seating area to deliver a deep tissue massage to release tension and increase blood circulation to these areas.

Dimensions*

203 cm x 203 cm x 84 cm

Seating Capacity: 4

Total Jets: 26

Acrylic Options



Platinum Midnight™

Cabinetry Colours



Charcoal

ProLast™ Cover



Black



Images for illustration purposes only. Dimensions and specifications provided for guidance only, actual product may vary. Please speak to your local retailer for pricing or for more information. *All hot tub dimensions are shown in: L x W x H. To view the full collection, please visit Jacuzzi.com

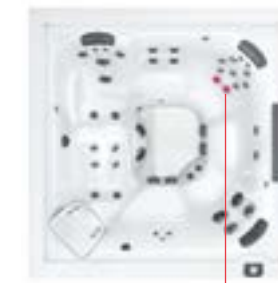
Full Collection - Specification Chart

J-LX® Collection



J-LX®

6 - 7 Seats
Total Jets
 41
Dimensions*
 226 cm x 226 cm x 87 cm
Dry Weight
 388 kg
Total Filled Weight
 2,052 kg
Average Spa Volume
 1,666 litres
Electrical
 32Amps / 40Amps
Massage Type
 PowerPro®
Number of Pumps
 2 x Jet Pumps, 1 x Circulation Pump
Infrared and Red Light therapy
 Included



J-LXL® LOUNGE

5-6 Seats (1 Lounge)
Total Jets
 39
Dimensions*
 226 cm x 226 cm x 87 cm
Dry Weight
 388 kg
Total Filled Weight
 2,098 kg
Average Spa Volume
 1,249 litres
Electrical
 32Amps / 40Amps
Massage Type
 PowerPro®
Number of Pumps
 2 x Jet Pumps, 1 x Circulation Pump
Infrared and Red Light therapy
 Included



J-400™ Collection



J-495™

8 - 9 Seats
Total Jets
 71
Dimensions*
 231 cm x 279 cm x 95 cm (110.5 cm at back)
Dry Weight
 495 kg
Total Filled Weight
 3,030 kg
Average Spa Volume
 1,893 litres
Electrical
 32Amps / 40Amps
Massage Type
 PowerPro®
Number of Pumps
 3 x Jet Pumps, 1 x Circulation Pump
Infrared and Red Light therapy
 Included



J-485™

7 Seats
Total Jets
 49
Dimensions*
 231 cm x 231 cm x 95 cm (120.5 cm at back)
Dry Weight
 415 kg
Total Filled Weight
 2,421 kg
Average Spa Volume
 1,647 litres
Electrical
 32Amps / 40Amps
Massage Type
 PowerPro®
Number of Pumps
 2 x Jet Pumps, 1 x Circulation Pump
Infrared and Red Light therapy
 Included



J-475™ LOUNGE

6 Seats (1 Lounge)
Total Jets
 55
Dimensions*
 231 cm x 231 cm x 95 cm (110.5 cm at back)
Dry Weight
 419 kg
Total Filled Weight
 2,444 kg
Average Spa Volume
 1,666 litres
Electrical
 32Amps / 40Amps
Massage Type
 PowerPro®
Number of Pumps
 2 x Jet Pumps, 1 x Circulation Pump
Infrared and Red Light therapy
 Included



J-435™ LOUNGE

6 Seats (1 Lounge)
Total Jets
 47
Dimensions*
 213.5 cm x 213.5 cm x 95 cm (110.5 cm at back)
Dry Weight
 373 kg
Total Filled Weight
 2,037 kg
Average Spa Volume
 1,363 litres
Electrical
 32Amps / 40Amps
Massage Type
 PowerPro®
Number of Pumps
 2 x Jet Pumps, 1 x Circulation Pump
Infrared and Red Light therapy
 Included



*All hot tub dimensions are shown in: L x W x H. All hot tub electrical requirements are 240 volts 50 hertz. Images for illustration purposes only. Dimensions and specifications provided for guidance only, actual product may vary. Please speak to your local retailer for more information.

Full Collection - Specification Chart

J-300™ Collection



J-385™

7 Seats
Total Jets
 51
Dimensions*
 231 cm x 231 cm x 95 cm
Dry Weight
 386 kg
Total Filled Weight
 2,618 kg
Average Spa Volume
 1,741 litres
Electrical
 32Amps / 40Amps
Massage Type
 PowerPro®
Number of Pumps
 2 x Jet Pumps, 1 x Circulation Pump



J-375™



6 Seats (1 Lounge)
Total Jets
 52
Dimensions*
 231 cm x 231 cm x 95 cm
Dry Weight
 376 kg
Total Filled Weight
 2,571 kg
Average Spa Volume
 1,685 litres
Electrical
 32Amps / 40Amps
Massage Type
 PowerPro®
Number of Pumps
 2 x Jet Pumps, 1 x Circulation Pump



J-365™

7 Seats
Total Jets
 46
Dimensions*
 213.5 cm x 231 cm x 95 cm
Dry Weight
 365 kg
Total Filled Weight
 2,257 kg
Average Spa Volume
 1,495 litres
Electrical
 32Amps / 40Amps
Massage Type
 PowerPro®
Number of Pumps
 2 x Jet Pumps, 1 x Circulation Pump



J-355™



6 Seats (1 Lounge)
Total Jets
 44
Dimensions*
 213.5 cm x 231 cm x 95 cm
Dry Weight
 369 kg
Total Filled Weight
 1,855 kg
Average Spa Volume
 1,363 litres
Electrical
 32Amps / 40Amps
Massage Type
 PowerPro®
Number of Pumps
 2 x Jet Pumps, 1 x Circulation Pump



J-345™

7 Seats
Total Jets
 41
Dimensions*
 213.5 cm x 213.5 cm x 92 cm
Dry Weight
 352 kg
Total Filled Weight
 2,036 kg
Average Spa Volume
 1,306 litres
Electrical
 32Amps / 40Amps
Massage Type
 PowerPro®
Number of Pumps
 2 x Jet Pumps, 1 x Circulation Pump



J-335™



6 Seats (1 Lounge)
Total Jets
 42
Dimensions*
 213.5 cm x 213.5 cm x 92 cm
Dry Weight
 347 kg
Total Filled Weight
 2,125 kg
Average Spa Volume
 1,325 litres
Electrical
 32Amps / 40Amps
Massage Type
 PowerPro®
Number of Pumps
 2 x Jet Pumps, 1 x Circulation Pump



J-325™

5 Seats
Total Jets
 23
Dimensions*
 213.5 cm x 193 cm x 85 cm
Dry Weight
 281 kg
Total Filled Weight
 1,983 kg
Average Spa Volume
 1,268 litres
Electrical
 20Amps / 32Amps
Massage Type
 PowerPro®
Number of Pumps
 1 x Jet Pump, 1 x Circulation Pump



J-315™



3 Seats (1 Lounge)
Total Jets
 23
Dimensions*
 168 cm x 193 cm x 80.65 cm
Dry Weight
 241 kg
Total Filled Weight
 1,300 kg
Average Spa Volume
 795 litres
Electrical
 20Amps / 32Amps
Massage Type
 PowerPro®
Number of Pumps
 1 x Jet Pump, 1 x Circulation Pump

J-200™ Collection



J-285™

7 Seats
Total Jets
 42 Proprietary Jets
Dimensions*
 226 cm x 226 cm x 91 cm
Dry Weight
 352 kg
Total Filled Weight
 2,225 kg
Average Spa Volume
 1,382 litres
Electrical
 32Amps / 40Amps
Number of Pumps
 2 x Jet Pumps



J-275™



6 Seats (1 Lounge)
Total Jets
 38 Proprietary Jets
Dimensions*
 226 cm x 226 cm x 91 cm
Dry Weight
 351 kg
Total Filled Weight
 2,205 kg
Average Spa Volume
 1,363 litres
Electrical
 32Amps / 40Amps
Number of Pumps
 2 x Jet Pumps



J-245™

7 Seats
Total Jets
 36 Proprietary Jets
Dimensions*
 213 cm x 213 cm x 91 cm
Dry Weight
 325 kg
Total Filled Weight
 1,971 kg
Average Spa Volume
 1,211 litres
Electrical
 32Amps / 40Amps
Number of Pumps
 2 x Jet Pumps



J-235™



6 Seats (1 Lounge)
Total Jets
 34 Proprietary Jets
Dimensions*
 213 cm x 213 cm x 91 cm
Dry Weight
 329 kg
Total Filled Weight
 1,918 kg
Average Spa Volume
 1,155 litres
Electrical
 32Amps / 40Amps
Number of Pumps
 2 x Jet Pumps



J-225™

4 Seats
Total Jets
 26 Proprietary Jets
Dimensions*
 203 cm x 203 cm x 84 cm
Dry Weight
 281 kg
Total Filled Weight
 1,726 kg
Average Spa Volume
 1,060 litres
Electrical
 20Amps / 32Amps
Number of Pumps
 1 x Jet Pump

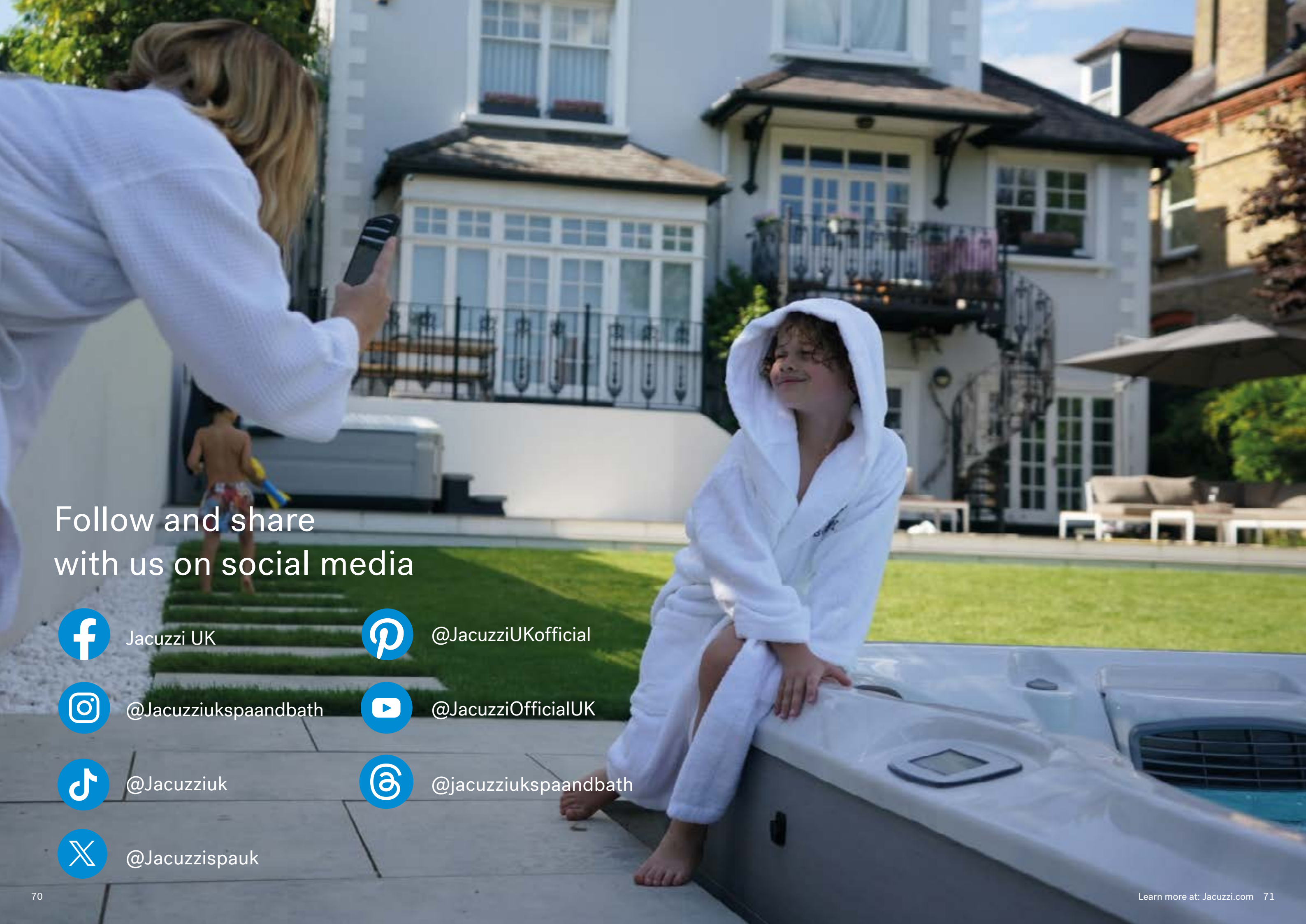
*All hot tub dimensions are shown in: L x W x H.
 All hot tub electrical requirements are 240 volts 50 hertz.
 Images for illustration purposes only.
 Dimensions and specifications provided for guidance only, actual product may vary.
 Please speak to your local retailer for more information.

Jacuzzi® AR Configurator

Design and configure your Jacuzzi® hot tub and see how it looks in your garden space with your configurations. No more guesswork!

View Our Hot Tubs In Your Space at
[Jacuzzi.com](https://www.jacuzzi.com)





Follow and share
with us on social media



Jacuzzi UK



@JacuzziUKofficial



@Jacuzziukspaandbath



@JacuzziOfficialUK



@Jacuzziuk



@jacuzziukspaandbath



@Jacuzzispauk

Jacuzzi® Hot Tub Warranty

Jacuzzi® Hot Tubs are built to the highest standard utilising over 65 years of global industry experience. In the unlikely event that you experience any problems with your hot tub, Jacuzzi Spa & Bath Ltd have you covered with the below warranty programmes which are supported by an experienced network of UK based authorised dealerships and Jacuzzi's own engineer team. We also have dedicated Customer Care Team on hand to contact with any questions or issues.

Warranty durations vary dependent on the product series you choose. A full breakdown of the hot tub series and warranty durations can be found below.

Please note this warranty does not apply to hot tubs purchased for a commercial setting.

PRODUCT WARRANTY

As a result of the care and attention to detail that we invest in the manufacture of our Jacuzzi® Hot Tubs products, we are confident that they will perform as desired for many years. However, occasionally defects do arise; should you discover a defect in your spa product we will carry out an investigation and repair or replace any defective components free of charge within warranty. The following warranty periods apply to your spa provided that it is purchased from us or an authorised dealer:

NB – in this warranty, a year shall mean the period of 12 calendar months.

SHELL STRUCTURE

Jacuzzi® Hot Tubs are warranted against water loss due to defects in the spa shell from the original date of delivery.

SHELL SURFACE

Jacuzzi® Hot Tubs are warranted against blistering, cracking, or delaminating of the interior surface of the spa shell from the original date of delivery.

EQUIPMENT AND CONTROLS

Jacuzzi® Hot Tubs electrical equipment components – specifically limited to the pumps, heater, and control system – are warranted against malfunctions due to defects in workmanship or materials from the original date of delivery.

PLUMBING COMPONENTS

Jacuzzi® Hot Tubs plumbing components are warranted against leaks due to defects in workmanship or materials from the original date of delivery.

CABINET

Jacuzzi® Hot Tubs synthetic cabinets are warranted against defects in workmanship or materials from the original date of delivery.

WARRANTIES FOR OTHER COMPONENTS

The fuses, headrests, cabinet finish and filters are warranted to be free of defects in workmanship or materials for 30 days following delivery.

The factory installed CLEARARRAY® water purification system is warranted against malfunction due to defects in workmanship or materials for one year from the original date of delivery, except the UV-C bulb and quartz tube, which are warranted for ninety (90) days from the original date of delivery.

All stereo related components (receiver, speakers, subwoofer, stereo media locker, power supply, wireless remote control, etc.) are warranted against malfunction due to defects in workmanship or materials for one year from the original date of delivery.

All other factory installed components not mentioned specifically including, but not limited to, the wood frame, jets, diverter valves, LED Lighting systems, filter shield and mechanical components are warranted against malfunction due to defects in workmanship or materials for two years from the original date of delivery.

GENUINE JACUZZI PARTS & ACCESSORIES

Genuine Jacuzzi® brand parts & accessories (Genuine Parts or Accessories) are built to our highest standards of quality, durability and performance, and they are designed to work with your spa to ensure optimal performance and function. This Warranty is void if and to the extent that we or our designated representative determine that the defect arises from parts and/or accessories (and/or their installation) that are not Genuine Parts or Accessories.

This disclaimer includes, but is not limited to filters, UV-C bulbs, ozone systems, repair parts and other accessories.

The below table demonstrates the key warranty areas offered by Jacuzzi® Spa and Bath Limited as well as the different durations given dependent on hot tub model.

Warranty area	J-LX® & J-400™	J-300™	J-200™
Shell Structure	10 Years	10 Years	10 Years From April 2022
Shell Surface	7 Years	7 Years	7 Years From April 2022
Equipment & Controls	4 Years	3 Years	2 Years
Plumbing Components	4 Years	3 Years	2 Years
Cabinet	5 Years	5 Years	1 Year

REGISTRATION AND NOTIFICATION

Please register your new spa within 7 days of delivery. You can register your new spa by signing up to our Jacuzzi® Club at www.jacuzzi.com.

Hot tubs must be registered before any authorized service work can be performed in order to provide us with the necessary details to provide the service work. This registration can be at any time before the work takes place (and does not need to be within 7 days of delivery), but note that earlier registration will allow us to provide services more quickly.

To obtain service in the event of a defect covered by this Warranty, you should notify us either through the support section of our website; www.jacuzzi.com or by telephone to the number below, or to your dealer, as soon as possible upon becoming aware that a fault has arisen. Upon proof of purchase, a designated service representative will correct the defect subject to the terms and conditions contained in this Warranty.

REPAIR

Upon becoming aware of a fault with your spa you should take all reasonable steps to ensure that no further damage is caused to it, for example by ceasing to use the stereo system or other component system (as appropriate), or the spa itself, until such a time as we or our authorised dealer are able to repair the fault.

There will be no charge for parts or labour to repair a defect with the spa which is covered by this Warranty, except to the extent expressly stated otherwise. You are required to provide clear and uninterrupted access to the spa to enable the defect to be repaired. If we are unable to access the spa when attending a repair we may refuse to carry out the repair until such a time as access is provided; in these circumstances we may charge you for our reasonable travel and any other expenses incurred in attending at your property.

In the event that the spa is removed to a repair facility for repair and reinstalled, the cost of removal and reinstallation will be at our expense or that of our authorised dealer.

We reserve the right, at our sole discretion, to either repair or replace any spa (or part of it) that is the subject of this Warranty. In the event that we choose to provide a replacement spa, it will be at least of an equal value and specification to that which is replaced. In such an event, reasonable costs for removal of the original spa, shipping from the factory for the replacement spa, and delivery and installation of the replacement will be our responsibility.

Any replacement part or spa will have the benefit of the original spa's warranty for the same duration as would have applied to the replaced part or spa (so that the warranty periods set out above will apply from delivery of the original spa and not the replacement part or spa). Spa covers are not included.

WARRANTY LIMITATIONS

The product guarantee is only valid for products used in the United Kingdom and installed in a domestic environment. This Warranty is void where defects occur from:

- General wear and tear, or alteration;
- The spa being uninstalled, moved, transported and/or reinstalled by a person not authorised by us or our authorised dealer;
- Repair by a person not authorised by us or our authorised dealer;
- Use and/or installation of parts and/or accessories which are not genuine Jacuzzi® brand parts or accessories;
- Misuse or negligent use which include any installation, operation or maintenance of the spa other than in accordance with the instructions contained in the owner's manual provided with the spa, including but not limited to the failure to maintain proper water chemistry and chemical balance and the use of abrasive or improper cleaners or parts which are not Genuine Parts and Accessories;
- Further use of the spa after a defect has been identified (in that we will correct the initial defect, but not be responsible for any further damage or defects resulting from use once that initial defect had become apparent);
- Damage arising in transit by a carrier that is not provided by

us or our authorised dealer; or

- The commercial use of the products.

Some parts of the spa are manufactured from natural materials (or man made materials replicating natural materials) which may change in the ordinary course of their lifespan; this may affect the look

- and feel of the spa. As such these are not regarded as defects, and include (without limitation):
- Products that have yellowed or changed colour in sunlight;
- Products that have failed as a result of the ingress of moisture which is reasonably expected to occur ordinarily as a consequence of use.

This Warranty does not provide cover for insulating covers, or any item attached to or installed on the spa by you.

In the event of us repairing or replacing the spa or its parts under this Warranty:

- We will have no liability for any loss of use of products during any period in which they cannot be used whilst awaiting or undergoing repair;
- In the event that the spa or the relevant parts cannot reasonably be repaired or replaced, or accessed or removed for repair or replacement, without causing damage to surrounding areas (including any decking, tiles or patio area, whether built to fit around the products or otherwise), we will have no liability in respect of any such damage or making good any such area but we will use reasonable endeavours to minimise any such damage; and
- If in our reasonable opinion the spa or the relevant part cannot be accessed as reasonably required to carry out a repair and you have not complied with a requirement to ensure access, then we will have no liability for any failure to repair or replace products.
- You accept liability for repair work performed by anyone other than by us or our representative.

THIS WARRANTY DOES NOT AFFECT YOUR STATUTORY RIGHTS.

This means that you may have other additional rights outside the scope of this Warranty on which you can rely, for example under the contract applying to your purchase of the spa. A summary of your key legal rights, in addition to those set out in this Warranty, is set out below. However, these are subject to certain exceptions and for detailed information please visit the Citizens Advice website www.adviceguide.org.uk.

If what you have acquired are goods, for example a hot tub, the Consumer Rights Act 2015 says goods must be as described, fit for purpose and of satisfactory quality. During the expected lifespan of your products your legal rights entitle you to the following:

- up to 30 days: if your goods are faulty, then you can get an immediate refund;
- up to six months: if your goods can't be repaired or replaced, then you are entitled to a full refund, in most cases; and
- up to six years: if your goods do not last a reasonable length of time you may be entitled to some money back.

If what you have acquired are services, for example installation or repairs, the Consumer Rights Act 2015 says:

- you can ask the provider to repeat or fix a service if it is not carried out with reasonable care and skill or get some money back if the provider cannot fix it;
- if you have not agreed a price beforehand, what you are asked to pay must be reasonable; and
- if you have not agreed a time beforehand, it must be carried out within a reasonable time.

This warranty card is designed for the brochure to show varying collections, for full and specific details by collection, please visit Jacuzzi.com to download individual warranty cards.

Anything else
is just a hot tub



Jacuzzi[®]

Hot Tubs

Anything else **is** just a hot tub



www.Jacuzzi.com

Jacuzzi Spa and Bath Ltd
Jacuzzi Group Head Office
8 Turnberry Park Road
Gildersome, Morley
Leeds LS27 7LE

HTBROCHURE24

